

## 1 Package

The packing box contains the following accessories, please confirm:

- Rearview mirror monitor
- wire harness
- User's manual
- wire cover
- Remote control(option)

For the items listed above, please check with your package box. If any damage, Please contact with the distributor or the agent as soon as possible.

## 2 Features

- Back up camera display
- Automatic brightness adjustment
- 4.0mm glass and  $\phi 21$ mm car factory OEM bracket
- Adjustable Back up guide line (option)
- Compass and temperature (option)
- Parking sensor (option)
- Manual dimming (option)
- Auto dimming (option)

## 3 Specification

- Screen Size: 3.5/4.3/5.0 inch
- Display Screen: TFT-LCD
- Aspect Resolution:
  - 480(H) X 272(V) (5.0inch)
  - 480(H) X 272(V) (4.3inch)
  - 320(H) X 240(V) (3.5 inch)
- Working Voltage: DC 12V
- 2ways Video Input:
  - Back up camera display (auto switch)
- Car DVD or other Video input
- Signal System: PAL / Auto / NSTC

## 4 How to install mirror monitor

### 4.1 Remove the original mirror



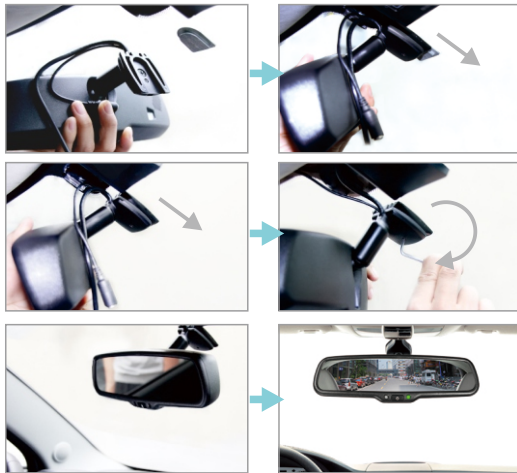
Car factory original mirror



The plate on the windshield

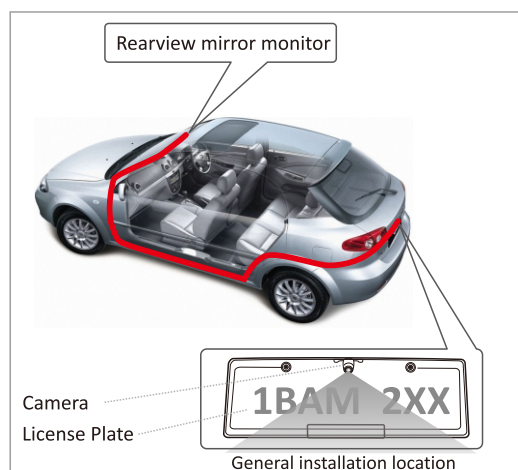
Different cars have different brackets. It depends on your vehicle maker and manufacturer. There are many methods to remove the original rear-view mirror, however, please don't force the mirror off the bracket. The manufacturer will not be responsible for damage caused to your car by wrong installation of the mirror.

### 4.2 Install mirror monitor on the plate



## 5 How to Install Reverse Camera

When a camera needs to be installed at the rear of vehicle, a good position is usually at the top of the License plate where there is an under ledge.



### Package

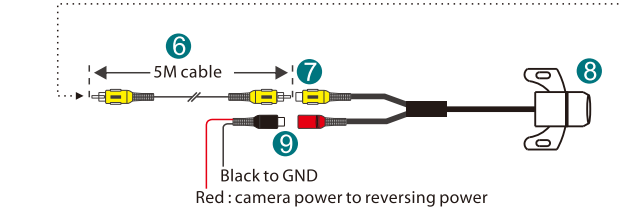
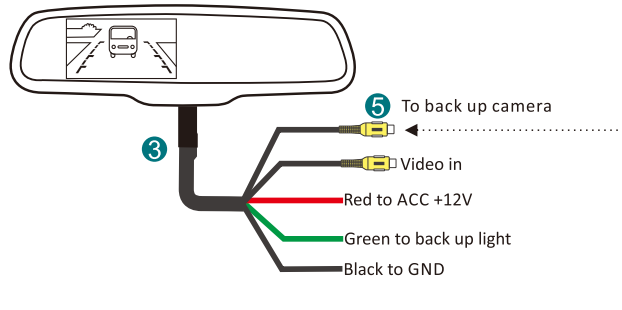
### Features

### Specification

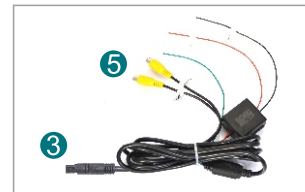
### How to install mirror and camera

## 6 How to wire

After the mirror is mounted, you need to run the cable along the roof lining and down the pillar so you can connect to power and the rearview camera.



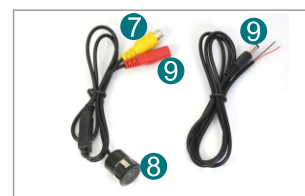
rearview mirror monitor



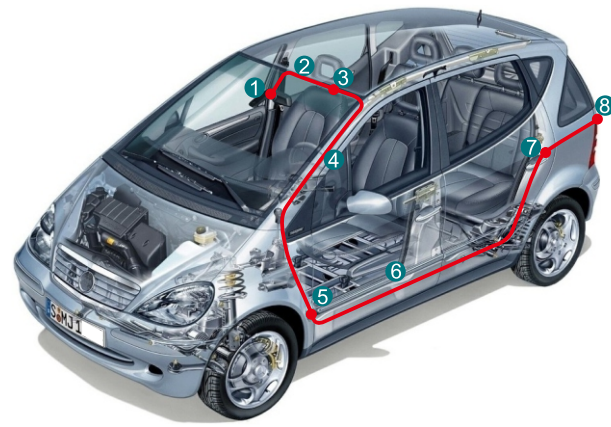
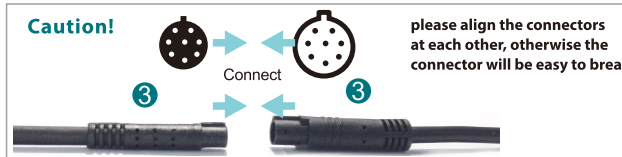
mirror monitor cable



Car camera extension cable



camera (not included)



### How to wire

### High-Reflectance mirror

### Adjustable guide line

## 7 High-reflectance mirror

Clear back up view displayed on high-reflectance mirror.



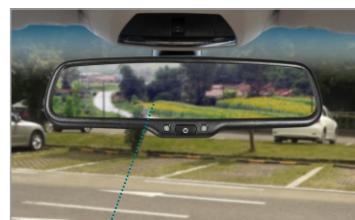
High-reflectance mirror



Normal-reflectance mirror

## 8 Back up camera display

When the car is in reverse, the monitor will automatically display backup camera.



A perfect reflective mirror



automatically display

## 9 Automatic brightness adjustment



When ambient light is weak, the screen will automatically reduce the brightness and get better for watching



When ambient light is strong, the screen will automatically increase the brightness and get better for watching

## 10 Auto dimming

The auto-dimming of our mirror works automatically when you start the engine, and the indicator will light up. The light sensor in the back of the rearview mirror detects the ambient light. When night falls and the ambient light is weak, auto-dimming starts to work and automatically dims to eliminate

the glare of rearward-approaching vehicles. Hence it protects drivers from high beam glare and avoiding car accident.



the light sensor from the back of mirror detects the ambient light



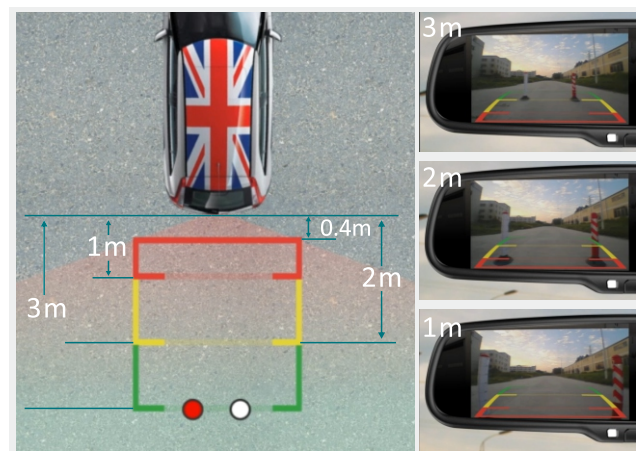
front light sensor detects the light from rearward-approaching vehicles.



## 11 Adjustable guide line(option)

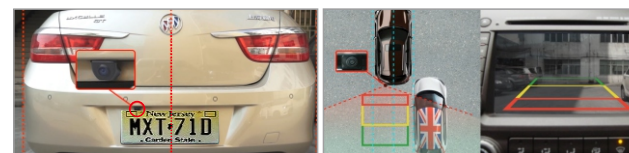
### 11.2 About guide line

Generally, to help drivers estimate the distance from obstacles, there are three lines for reference -red, yellow and green. Those three lines are displayed on the monitor when car is reversing. The green line is 3m way from the back of car and the yellow line is 2m. The distant red line is 1m way from the backside of car while the closed red line is 0.4m. Both reference lines on the left and right should leave 0.2m from the car.



### 11.2 What the regular guide line is

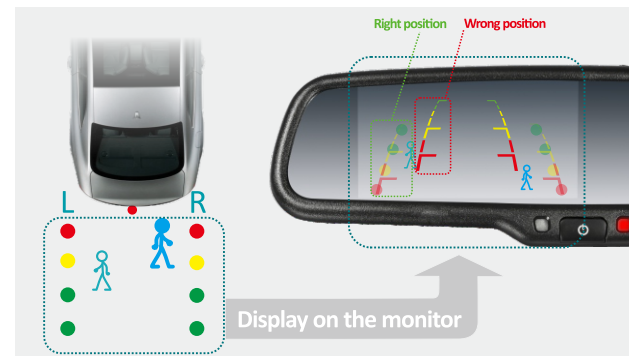
Regular guide line is fixed. But installation sites of cameras are different as well as car size. The fixed guide line is not accurate enough for drivers. There is a great difference between regular and fixed guide lines and car's real guide lines, especially when camera is mounted on the left or right side of car backside. It may cause accidents.



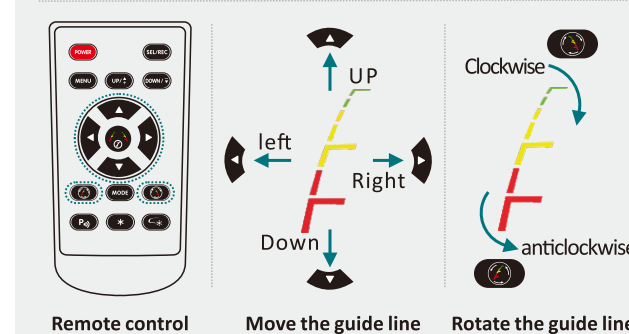
### 11.3 How to adjust the guide line

According to the site of standard reference line, we can put reference objects such as desks in the back area of car. Compared with the marked reference objects, we can adjust the sites and angle of two guide lines displayed on the monitor. You will get the accurate and safety guide lines once they coincide with the reference objects. Press setting button (S) is to enter into "guide line adjustment" mode. The system is defaulted to adjust left guide line firstly. Press the button again will switch to adjust the right guide line. The up (U), down (D), left (L) and right (R) buttons are to adjust the correspondent location of guide lines. The clockwise rotation (C) and contra rotation buttons (A) are to adjust the angle of guide lines. It is easy to operate and calibrate. After finishing calibration, switch the reverse gear to save the information.

**Caution: keep the remote control 0.5m-1.0m from rearview mirror when you use the remote to adjust the parking lines.**



Press the button to choose the L or R adjustable guideline



# Ultra High Brightness Mirror Monitor

— User Manual —